

PART OF THE E.1/2, OF SECTION 24, T.6N., R.2W., S.L.B. & M.  
**BOYER TWELFTH STREET SUBDIVISION**

495

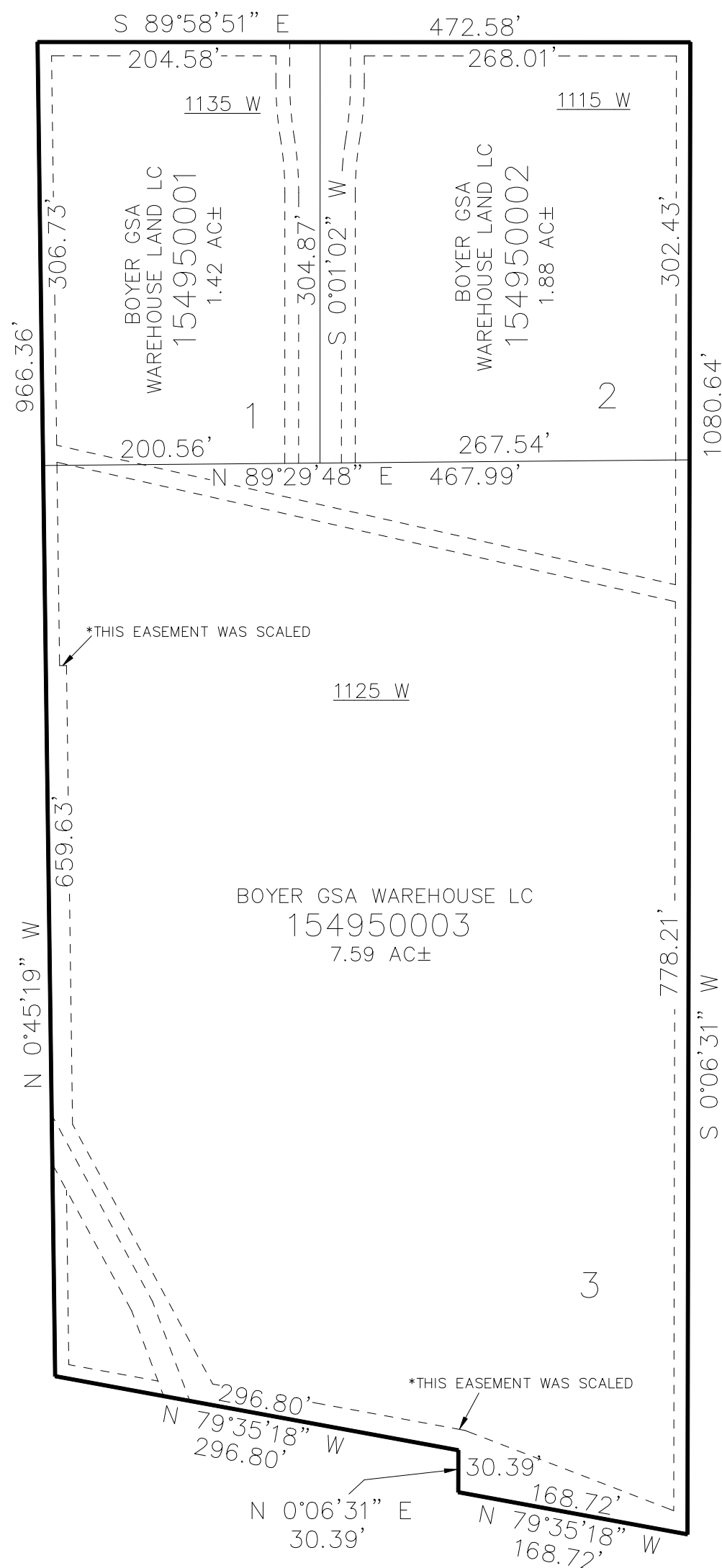
TAXING UNIT: 362

IN MARIOTT-SLATTERVILLE CITY

SCALE 1" = 100'

SEE PAGE 62

12TH STREET



10' UTILITY & DRAINAGE EASEMENTS EACH  
SIDE OF PROPERTY LINES AS INDICATED  
BY DASHED LINES EXCEPT AS OTHERWISE  
SHOWN.

FOR COMPLETE ENG DATA SEE  
ORIGINAL DEDICATION PLAT IN  
BOOK 70, PAGE 28 OF RECORDS.

SEE PAGE 62